



PO Box 38  
GLENORCHY, 9350

EMAIL gycommunityassn@gmail.com  
WEB SITE www.glenorchycommunity.co.nz

**Minutes for the meeting of the Glenorchy Community Association  
held on the 3rd May 2018 at 7:30pm in the Glenorchy Hall**

COMMITTEE: John Glover, Sam De Reeper, Will McBeth, Robert Bakhuis, Mark Hasselman, Irene Hartley, Danelle Jones

PRESENT: Corrine Davis, Paul Chapman, Katherine Schuitemaker

**1. Chairman's introduction and welcome.**

Welcome everyone to the last meeting of the GCA year, the next meeting will be the AGM. It is amazing how quickly the year goes.

**2. Apologies**

Ferg, Steve Hewland, Trish Fraser

Motion ' that the apologies received be accepted'  
Glover/DeReeper

**3. Minutes of the April 2018 meeting.**

Motion 'that the minutes be accepted as a true and accurate record of the meeting'  
Glover/Hartley

**4. Matters arising from the previous meeting not covered elsewhere on the agenda.**

Glenorchy Sign, North end of town.

Danelle inspected the wooden Glenorchy sign at the one mile in queenstown, like the Glenorchy sign it is in need of refurbishment. Photos were shared with Katherine and plans are being made to combine with the work on the Gy sign. There is a wooden banner on the bottom of the sign which is badly cracked and will most likely just be removed from the sign.

Sam - happy to help bring the sign back up to Glenorchy to be worked on.

Tussock - Cars are often parking in front of the sign and blocking its view, can we raise the sign?

Log - Perhaps we can request permission to landscape around the sign and make it more prominent and improve its overall appearance.

Will - The other NZTA style sign also needs some maintenance; posts painted and sign straightened. The request for service, to have the Northern GY sign relocated, is still to



be done. Add to the RFS a request to have the Queenstown sign repaired and landscaped.

Glenorchy Hall, maintenance and user guidelines.

APL have scheduled the 14th of May for the hall to have cleaning and maintenance; new curtains, cleaning, painting. There is a leak in the roof that also needs inspection - Sam to get APL to add this to their tasks.

APL have provided Sam with an example of a user/hire agreement from the Arrowtown hall. It is a large legal style document describing requirements such as users requiring public liability insurance. This type of document is too complicated for what we want to achieve, which is a greater care of the building.

Sam to draft a single page terms of use document with basic requirements and guidelines for hall users.

Log- Perhaps we could consider a review of the fee schedule for the facility. Sam to talk to Rhonda to see what fee is charged now and whether any movement would be appropriate.

Deer carcass at Bucklerburn

Buried by Sam and Danelle

Waste management meeting

Log chaired a meeting on Sunday the 29th, with GCA, Sustainable Glenorchy and general public. a good constructive meeting was held. Minutes were taken by Danelle.

Two submissions were drafted (GCA and Sustainable Glenorchy) and these have been submitted to council. The submissions included a request to speak at the hearings. Many ideas for waste management were discussed at the meeting, including;

A waste facility designed to gather visitor and tourist wastes, rather than have their waste clog up the public litter bins around the waterfront and town. The facility was proposed to be located on the northern side of Mull street near the Fire Station or DOC. It would be set back into the tree/garden line of the Rec ground and be a 3 sided construction with a collection of bins - General rubbish, Organics/compost, recycling. it would not be a 'skip'. Signage would be placed in locations like the dart bridge and road ends to steer visitors to the facility and to minimise litter around rural sites, social media apps would be used as well.

The meeting was against the kerbside collection of organics but rather would prefer the better utilisation of the existing green-waste area. Suggested the Composting facility proposed by the Headwaters be added to compliment the green-waste area. Keen to make people aware of the composting subsidies available.

Noted was the problem with Rural wheelie bins being refilled by tourists, public litter bins in the rural area were included in the submission.

Submission asked QLDC to look further into construction wastes and place more responsibility on construction companies

More monitoring of waste collection contractors suggested, to minimise rubbish spill and fly away rubbish from the back of collection trucks.

Regular clean ups of road sides and rural road verges.



The Sustainable Glenorchy submission was very close to the GCA submission but went further on issues like banning some plastics and promoting more recycling.

#### Civil Defence subcommittee

The first meeting was held last night (2nd May), a good number of people volunteered for the committee. Trevor Andrews (Otago emergency management) attended and we went through the draft community plan. Hopefully Trevor now has enough to finalise the plan. The next task for the committee is to assemble a list of skilled and interested members in the community who could fill roles in an incident management team, this will compliment work to complete the tactical plan. Trevor acknowledged the huge amount of work done by Richard Kennett, Richards plans and directory of local civil defence resources will be used in completing the Tactical plans. The towns initial Incident control point (ICP) is designated as the Fire Station. Representatives from relevant agencies would assemble there to manage the incident response.

### **5. Secretary's report**

#### Incoming

- Civil defence subcommittee volunteers and subsequent emails
- Ferg- sending his apologies and comments regarding progress at Bennetts Bluff - notes below
- Nikki McDermott - information regarding a funding clinic in arrowtown
- Anita - Expression of interest from Playgroup to host the next fishing competition - note below
- Briana Pringle QLDC - Glenorchy waterfront toilet (on agenda below)
- Steve Hewland - CC'd messages regarding Glenorchy road report (on agenda below)
- Shane Melton - Request for Multilingual signs for the Lagoon walkway, litter issue - notes below
- Shelly Dawson QLDC - 10 year plan, invite to speak to submission
- Zero waste QLDC - acknowledgement of submission
- John Glover / Ben Greenwood - Waterfront improvements (on agenda below)
- Orange Blossom - invoice for ANZAC wreath
- Ivan Strang - comments for waste submission. Email chain including Sustainable Glenorchy
- Cam Wood - film company requesting invoice for filming on wharf
- QLDC - acknowledgement of Long term plan submission
- Eleanor Ross ORC - ORC ten year plan

#### Outgoing

- Various replies and email chains relating to content above
- Submission to the QLDC 10 year plan
- Submission to the QLDC waste minimisation plan
- Sam - requesting template of Hall user guidelines from APL



#### Bennetts Bluff

Ferg has requested that the GCA make contact with council and arrange a meeting at Bennetts Bluff. So far Mr Kirkland and council have not been able to reach agreement and Ferg would like GCA to become more involved.

From the GCA perspective we know little about plans and what has been proposed so very happy to get involved. GCA to make contact with Peter Hansby and arrange a meeting on site. There are a whole list of uncertainties to clear up.

#### Fishing Comp

GCA are delighted to receive hosting interest so soon and are very happy to have Playgroup organise the event.

#### Rubbish Signs for GY walkway

Shane commented: Could the GCA raise with Councillor Ferguson and/or DoC the significant increase in small litter being dropped on the Glenorchy Lagoon track. That some urgency be given to multilingual signs be placed around the loop to discourage tissues, butts, lolly and chip wrappers (chinese labelled), sanitary pads, drink bottles not be dropped along the track -and- that no toileting be done on this track loop. The increase in Chinese bus tourism has been huge this past 2 years. And on a regular basis we ourselves go pick up several bags of their small rubbish on this track.

The group discussed the issue.

Sam - how about a rubbish bin placed at the end of Oban St to try and catch rubbish before many enter the track. the North end of Oban St is a common parking place for busses.

Will - Often Signs do not work and will have little effect on behaviours.

Others - Perhaps need to educate the tour companies/buss drivers who are delivering the large groups on to the track. discussion continued into the difficulty of achieving this.

Danelle - There is a start up group in queenstown who get together and focus on entrepreneurial and creative solutions to problems, perhaps we could take this problem to them, bearing in mind that this is not just a local issue and needs to be dealt with nationwide.

Perhaps a two pronged approach, firstly Bin (and perhaps some signs), and then in the longer term the creative solutions.

GCA to request QLDC provide a litter bin at the end of Oban st. Request "no litter signage" from QLDC .

Danelle to investigate future possibilities

Motion 'that the inward correspondence be received and the outward correspondence be approved  
Glover/Hartley



## 6. Treasurer's report

The GCA accounts are being audited now. So far this year we have done pretty well, there has been an increase in swimmers and an increase in rates from QLDC. Currently planning to re-paint the pool and repair the spouting

GST return has been completed

Finances SBS 1/5/2018

Investment account	\$15,812.55
Transactional account	\$20,384.82

Motion 'that the treasurer's report be noted'  
Hasselman/Bakhuis

## 7. Councillor Ferguson's report

Ferg was unable to attend the meeting and no report was available

## 8. General business

### 8.1 Glenorchy Road improvements report

Steve Hewland sent his apologies and was unable provide an interpretation of the recently released Glenorchy road report and an update.

Ideally we need to get together with Steve and someone from council to go over the report and important issues.

Log - Could we Lobby to have the vegetation cut away from the blind corners on the GY road, to open up sight lines.

John - Is there a case to have more places cleared for better lake views.

Huss to talk with Steve and try to get movement and better understanding on the issue

### 8.2 ORC ten year plan submission

Last Monday Ella Lawton from ORC was at the Lodge to take questions about the ORC ten year plan, John commented that it was a good session. Lawton described the plan as going on as 'Business as usual'.

GCA have drafted a submission which was read out by John.

Continued discussion commented to add a note regarding gravel aculation in the Rees and mitigation of flood risk to Glenorchy. Also should comment on issues affecting the town flood bank

Lawton seemed to have a level of frustration at ORC, they have the strategies and plan but seem hesitant to put things in action.

Continued discussion. A coof the submission will be made available on the community website.

**8.3 Waterfront toilets**

We are getting closer to the town getting additional public toilets, QLDC have asked for a site selection as they engage in the next step of their funding processes.

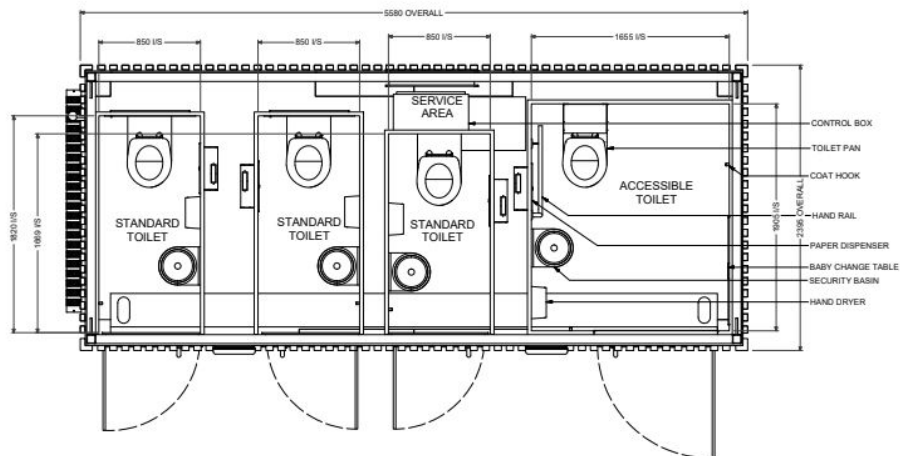
We received indication from Ben Greenwood that there was funding available in the minor improvements budget for works at the waterfront. Huss and John met with Ben at the waterfront for a walk over. it was clear that this tied in with toilet plans.

Briana Pringle requested we consider 4 potential sites for placement of the new toilets at the waterfront. the proposed toilets were intended to be a 4 pan Exoloo flushing system

Roughly similar to this:



FLOOR PLAN



The GCA felt the 4 proposed locations were not suitable (the locations had been chosen by APL on the basis of nearby services - electricity and water). Briana warned that not using these sites would increase costs which were already estimated at \$700k





Briana called a meeting to bring all waterfront issues together. John and Will attended along with Briana, Ben Greenwood, Philip Blakely, Jeanie Galavazi.

Discussion at the meeting circled around the history and context of the waterfront plans, toilet issues and bus/car parking issues.

John and Will pointed out that the new toilets would require a wastewater system raised concerns over wastewater disposal on the low lying waterfront.

It was pointed out again that Glenorchy is in need of a whole of town traffic and parking review, as submitted on at the 10 yr plan.

It was acknowledged by Jeanie that the waterfront vista is too important to be turned into a bus park and toilet block

The Council consultant engineer will draw up working plans for construction of the parking area on corner of Benmore and Mull, as per the Waterfront plans. Place bollards along Benmore to prevent vehicles damaging the waterfront lawns. And re-gravel the parking area north side of the marina.

We raised at the meeting the DOC style vault toilets, like the ones at Sylvan, Wilson Bay and 7 mile. And argued that these are probably better suited for the low lying areas close to the waterfront, The were designed to withstand flood and were constructed for approximately \$70k each. It was also felt that two of these structures would be more in-keeping with the Glenorchy waterfront feel.

Corrine - Perhaps level out and open up the willows by the skate park.

Will threw in the suggestion of utilising the open lawn area of conservation land on the corner of Mull and Oban streets (in front of the DOC field center) as a potential site for developing a tourism hub in the town providing public toilets, bus and van parking, tourist rubbish and litter collection and interpretive notice board/signage.

Current planned works will not delve into bus parking issues as we are hoping for that to be part of the whole of town plan.

Chains threaded through the bollards were discussed, these could be removable to allow cars during summer dry periods and when the turf could handle it.

The final location of toilets and the style is still unclear

discussion continued over the vault toilet concept and potential composting options

It was determined that the Exoloo style would not be appropriate for the waterfront and it was doubtful they were suitable for a flood zone.

It was agreed we should not compromise the ascetics of the waterfront.



**8.4 AGM 2018**

Planning and discussion to begin in preparation for Junes AGM. Items to discuss are; community engagement, event format, promotion and attracting candidate nominations

With the time coming for the next AGM we need to decide how to run it and how candidates/nominations would be handled. do we do it the same as last year and do we want to do something more social and engaging.

Need to promote event to improve membership and engagement

Date of 7th of June chosen.

Whole committee to stand down and seek re-election if wanted

Notification to go out to website

Ask for nominations prior to the AGM, if more than 7 nominations then a vote will be held. If less than 7 then all elected and the remaining seats to be called from the meeting.

Constitution does not provide clarity on this process.

It is better to have a vote and remain democratic and renew our mandate.

**9. GCA update report May 2018**

Current issue	Aim	Status
GCA organisation	Improve engagement, effectiveness, reputation etc	Formal review needed but deferred for now
Wastewater	Management of wastewater meets needs, rules and community vision	<p><i>The second round of groundwater sampling has been undertaken and is being analysed. Two additional monitoring sites in the lagoon area have been identified during this process and will be sampled as part of the final water sampling. It is still anticipated that a draft report summarising the results from the sampling will be produced and available for issue before winter 2018.</i></p> <p><i>QLDC are working with Veolia regarding the water meter monitoring scheme and are working with confirming the dates and process for installation of the commercial operators which have been identified and agreed to have a meter installed</i></p>



District Plan rules GY	Ensure new rules meet community needs and aspirations	Submissions closed 23 February 2018.
Airstrip	Operates as per management plan	Governance committee now established. Log representing GCA. Single point of contact established at council.
Waterfront plan	Gradually implement	Plan was adopted by QLDC
Town centre plan	Re-designed streetscapes, parking etc, traffic flows.	Submitted for as part of 10 yr plan
Peninsula Reserve management plan	QLDC produce plan	Council indicate management plans for GY reserves 'within the next few years'
Civil defence plan	GY specific plan and trained residents	QLDC Emergency Officer, Trevor Andrews, presented draft plan. subcommittee is now established, lead by Sam
Additional Toilets	Waterfront, lagoons, in town	Additional toilets - funding was approved at the last Community & Services meeting/ \$250k for one exeloo. To read the report with pictures from APL see <a href="https://www.qldc.govt.nz/assets/Uploads/3.-Public-Toilet-Facilities-Improvement-Report.pdf">https://www.qldc.govt.nz/assets/Uploads/3.-Public-Toilet-Facilities-Improvement-Report.pdf</a> Style and site not yet determined
GY road improvements		Road improvements report received. Discussion planned for May meeting but deferred
Establishing a community garden	Implements vision plan recommendation	Meeting held but very poor attendance. Revisit in 6-12 months.
Camping area	Manage the effects of freedom campers by providing suitable location near the town	Discussion started at Aug 17 meeting. Feeling is that as commercial providers are providing options in the town nothing further should be done at this stage.
Pool improvements	Improved user experience	all up to date
Marina improvements	Better quality, maintained facility	Request for ladders at marina and wharf made.



Additional bins in rural area	Less littering and dumping in residents bins	Submitted for as part of Waste minimization submission
Tennis courts	Need resurfacing	Plan is to re-orientate the courts to avoid glare from sun. No \$ for this currently
Hall	New curtains, crockery, cabinet for PA system	Plan of works to be undertaken soon

end