

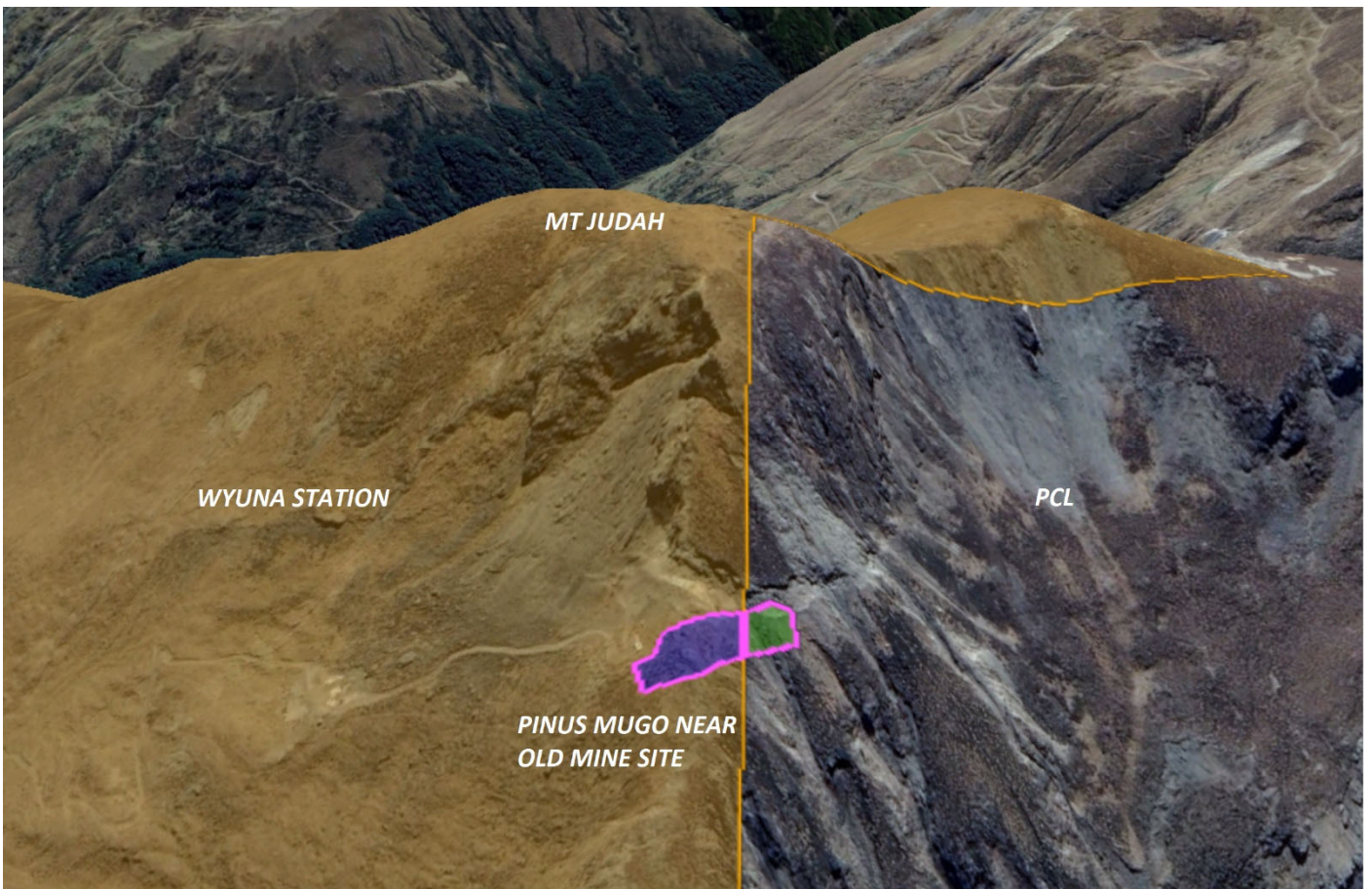
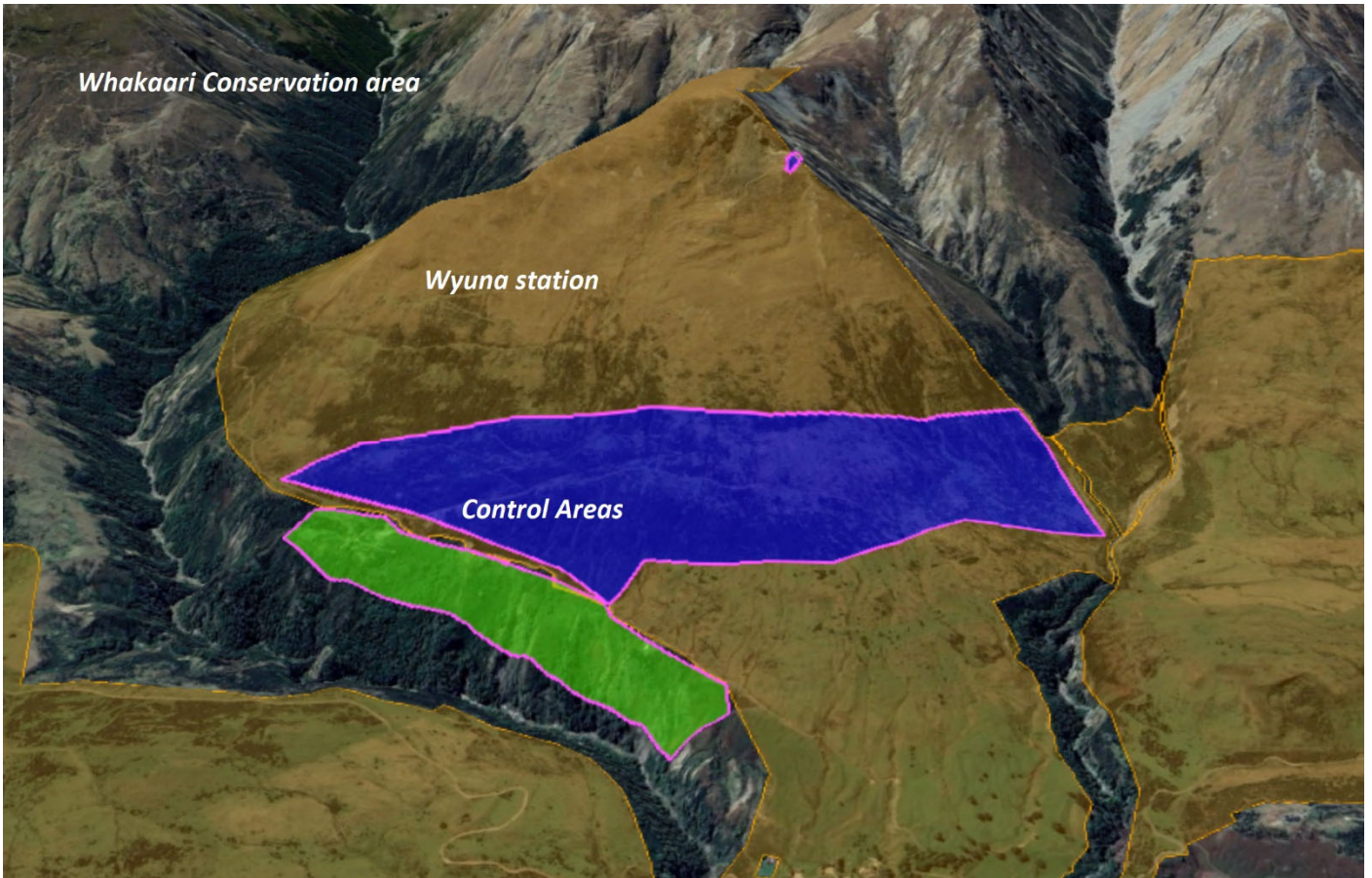
Wilding Conifer Control - Operational Prescription

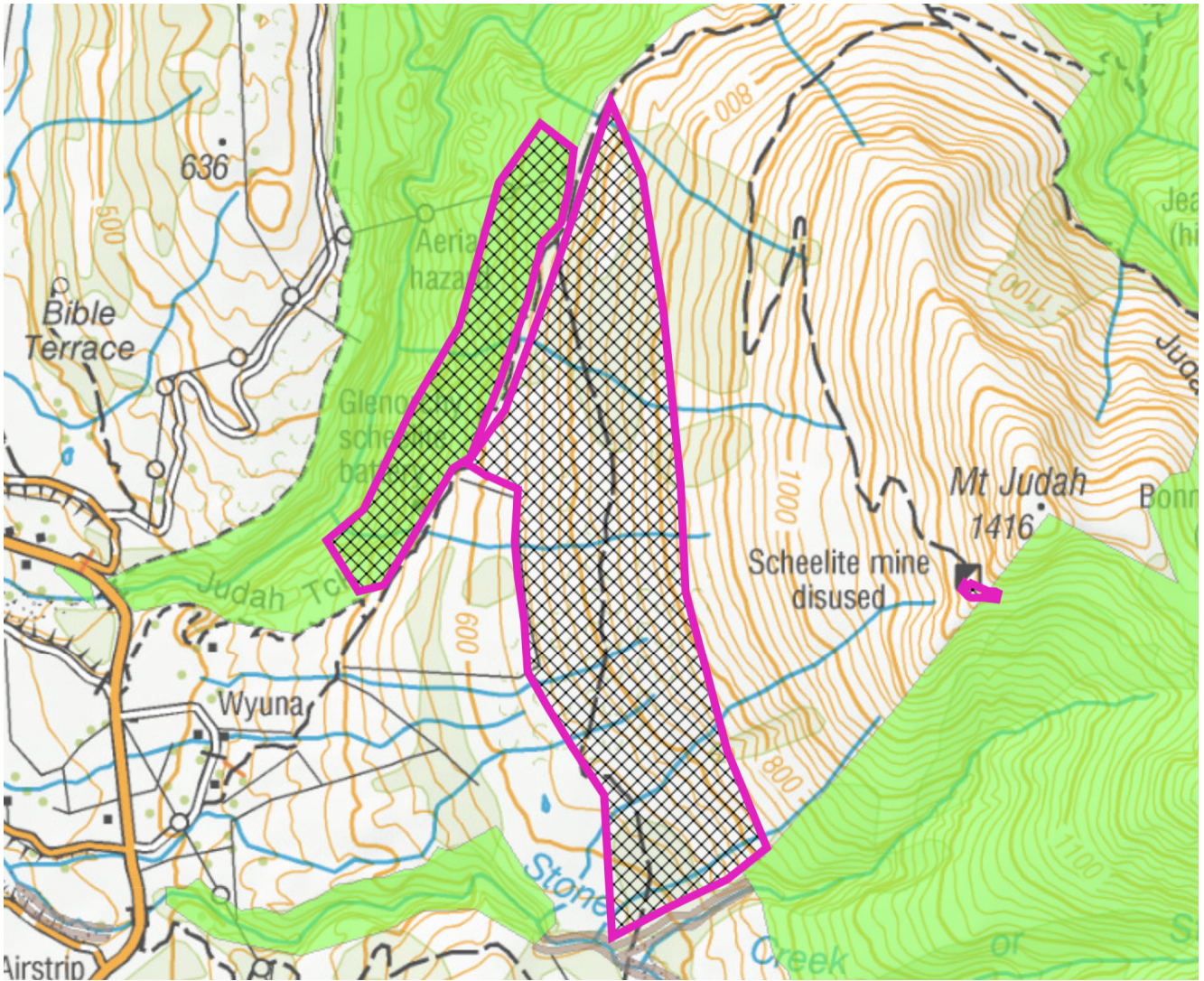
Aerial control

General information and imagery:

Prescription Reference	Mt Judah
Issued to:	Aspiring helicopters
Date ordered:	18/09/20
Grounds:	<p>125ha's of scattered wilding infestations around the front faces of Mt Judah, over Public conservation lands, and Lands managed by Wyuna Station.</p> <ul style="list-style-type: none"> • Main front faces – Skid hopping <ul style="list-style-type: none"> ○ PCL – 27ha ○ Wyuna Station – 98ha • Mt Judah Mine - Lancing <ul style="list-style-type: none"> ○ PCL – 0.1ha ○ Wyuna Station – 0.2ha
Situation:	<p>The vegetation on the front faces of Mt Judah is mainly grazed pasture, Manuka Scrub and grazed tussock, however throughout this area is an increasing prevalence of mature coning Wilding conifers emerging through the scrub and pasture. Douglas fir, Radiata and Corsican pines are scattered over the hill, these have spread from nearby shelterbelt and homestead trees. Trees are in relatively low numbers now, but Wilding infestations grow exponentially, they need to be removed now before a bigger infestation overcomes the suppressive effects of grazing.</p> <p>Also a small area of Dwarf Mountain pine (<i>Pinus mugo</i>) remains around an old high altitude Scheelite mine, the original mature trees, planted by the miners, have been removed some time ago but their seed has now spread the trees over approximately 3000 square meters of the fragile alpine environment, some of this steep and precipice. Mugo can be difficult to kill and must be removed now before a major infestation takes hold.</p>
Mission:	<p>Sweep mapped area with a helicopter and Skid hopping crew and fell all mature wilding conifers within block boundaries.</p> <p>Use Helicopter to lance (ABBA) Mugo infestation from around old mining site and alpine bluffs.</p>
Time frame:	1 day during September/Oct 2020.

Maps and Imagery





Mt Judah Mine



Aspiring heli - Mt Judah

Mt Judah mine, looking down hill



Mature Wilding conifers protruding through the scrub above the Judah road



Aspiring heli - Mt Judah