



# Glenorchy School



TERM 2 ISSUE 4

JUNE 21ST

## DATES

### Ice Skating

3rd June-8th July

### Bike Safety Week

20th-24th June

### BOT Meeting

23rd June

### Ski Camp Parent Meeting

30th June

5:30 p.m

### Parent/Student Portfolio Evening

6th July

TERM 2 ENDS  
8TH JULY

Today is the shortest day , its all up hill from here.

This photo of our first daffodils says it all.

Term 2 is positively flying by we have just over two weeks to go.

This is the last week for soup and I have to say our Junior's are the best soup eaters ever. The Senior's have been great cooks and the best bread eaters ever.

I would just like to take this opportunity to thank Shelly for all her work with the Soup. The staff will miss Tuesday Soup day.



### Cassino Royale Ball Tickets:—

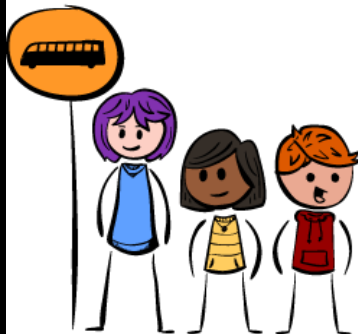
Fund Raiser for Glenorchy School. - Get your Ball tickets ASAP as there is a lot of interest and they are selling very steadily. I would hate for anyone to be disappointed and miss out.

PTFA are busy working behind the scenes to make this a night to remember.

### Bus stop

We have a bus stop sign outside the school now. - This is to ensure that the students have a safe entry and exit on and off the bus. This is also to encourage tourists not to park there.

The bus will be parking parallel outside the school. Please check this out and keep this area clear when you are parking outside the school.



### Board Meeting

Next meeting - 23<sup>rd</sup> June 4.30pm.

### Road Safety Week This Week

22<sup>nd</sup> June to go over some safe cycling with the students



## Student Led Conferences and Interim Reports

Wednesday 6<sup>th</sup> July will be the evening put aside to celebrate and share the Glenorchy School portfolios and interim reports for term 2.

### Junior Times

3.30 – 3.45pm - 4pm 4.15pm – 4.30pm – 4.45pm -

At 5pm - You are welcome to come and join the senior room and explore what they have been doing.

6pm – 6.15pm – 6.30pm – 6.45pm.

Book your time with Gorette now.



### Senior Times

At 5pm – the Senior class will open and they will take you on a world tour.

6pm – 7pm - parents and students gather around their

Individual portfolios to discuss and celebrate progress so far this year.

**ALSO** a friendly reminder to all the Parents who haven't paid their child/children's Ice Skating Fees to  
Please pay before the end of term 2. Thank you.



### **The Taniwha By George**

The head of the taniwha was as large as a tractor wheel.

The taniwha's eyes were as big as a lightning strike.

His mouth opened like the jaws of the giant Matau.

The taniwha's tail was as big as a rattle snake.

His enormous feet crushed everything in their path.

Glenorchy School, PO Box 19, Oban Street, Glenorchy 9350.

Phone: (03) 442 9900 Fax: (03) 442 9975 Email: [office@glenorchy.school.nz](mailto:office@glenorchy.school.nz)



